



SURFACE WATER TO COPPERFIELD

The construction along West Road and Highway 6 is part of a new water source coming to the Copperfield Area and MUD 208 from the West Harris County Regional Water Authority (WHCRWA).

Drinking water for the Copperfield area is currently provided by various Municipal Utility Districts (MUDs) that pump water from groundwater wells, treat it, and distribute it to users via MUD owned and operated facilities. While groundwater wells have been a reliable source to date, the impacts of groundwater pumping are becoming more evident, with the most significant being subsidence, the settlement of land resulting from the removal of groundwater from underlying clays. Subsidence has caused damage to underground utilities, roadways, building structures and most significantly, has increased the risk of flood damage by lowering ground elevations.

In an effort to eliminate subsidence, the Harris-Galveston Coastal Subsidence District (HGCSO) was created to regulate the withdrawal of groundwater within Harris and Galveston counties and to require regions to convert from groundwater supplies to surface water supplies. WHCRWA was created in 2001 in order to meet the HGCSO's groundwater reduction requirements for the west Harris County area., which includes Copperfield and MUD 208. To comply with these regulations, MUD 208 has been actively negotiating with and assisting the WHCRWA to provide surface water to our District. To meet this plan, the Copperfield MUDs including MUD 208 have worked with the WHCRWA to contract with the City of Houston as a surface water provider. WHCRWA has already taken significant strides toward its goal of developing the necessary infrastructure to provide surface water and meet the HGCSO's groundwater reduction requirements.

The nearest City of Houston water supply to the Copperfield area is in the vicinity of FM 529 and Eldridge Road; therefore additions to the existing water system are currently under construction. Many of you are undoubtedly aware of these efforts due to the impact these additions have had on West Road and Highway 6. Installation of the water transmission lines in Contract 4, which will provide the additional water service to MUD 208, are scheduled to begin this month. The final construction efforts related to this contract will not be complete until next summer, however, the improvements under West Road should be wrapped up near the end of this year.



WHCRWA—WEST ROAD PAVEMENT REPLACEMENT

Once all of these construction activities are complete, and the area districts start receiving surface water, local residents may experience differences in the water coming from their taps. These differences could include a slight change in the water's taste and/or odor, and should include a reduction in the water's hardness. During this transition period, the District will be provided water from the WHCRWA water supply as well as continuing to operate MUD 208's groundwater wells. MUD 208 will be monitoring the water and taking every step available to reduce any impact these changes have to our residents.

With this information in mind, if any resident is considering purchasing new in-home water treatment, softening, or purification equipment, we would suggest that they consider delaying any action until the transition is complete. This will allow the resident, or their equipment supplier, to better analyze the new water supply and recommend or install equipment that will achieve the desired results.

Should you have any questions about the construction efforts, please contact the WHCRWA's Copperfield Waterlines Construction Manager, Troy Anthony, at (713) 821-0443. Additional information and a map of proposed water line layouts can be found at <http://www.harriscountymud208.com> and additional information about the WHCRWA can be found at <http://www.whcrwa.com>.

Contract 1: Provides service from the water source to West Road and Eldridge area (Began July '04 – Ending May '05)

Contract 2: Provides service to Highway 6 and West Road (Began June '04 – Ending May '05)

Contract 3: Provides service along Highway 6 and West Road to Telge (Began June '04 – Ending May '05)

Contract 4: Provides service to MUD 208. Along Park Falls, Royal Gardens and Shangrila (Began September '04 – Ending June '05)

WINTERIZE NOW

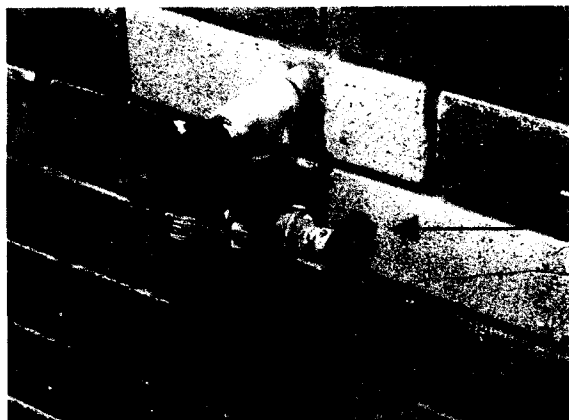
Texas weather can change quickly, especially in the winter. When a bitter cold front rolls in, spring like conditions can give way to freezing temperatures within hours.

When water freezes, it expands. If ice forms in your homes water pipes, it can shatter pipe seals or the pipes themselves, sending water pouring through your house. Most residents in the Copperfield area have copper or pvc pipes, which are susceptible to freezing and breaking in subfreezing temperatures if not adequately insulated.

You can avoid thousands of dollars of damage to your walls, ceilings, carpets, and furniture by making a little investment in time to prepare before the first cold spell hits.

BEFORE THE FREEZE

- Use faucet covers, or wrap rags, paper, trash bags, or plastic foam around faucets and outdoor pipes from the ground to the faucets. Insulated foam wrap and covers are available from any home supply or hardware store.
- Cover any vents around your homes foundation.
- Bring water hoses indoors.
- Open the cabinets under the sinks on your kitchen and bathrooms to allow heated in door air to circulate around water pipes.
- Protect outdoor electrical pumps.
- If you have a swimming pool, either drain the circulation system or keep the pump motor running. (Run the pump motor only in a short freeze. Running the motor for long periods could damage it.)
- If you let your faucets drip, water pressure in the water system may lower causing the water to no longer drip and possible freezing can occur.
- If you leave town, or for during the night, consider turning off your water at the master shut-off valve while faucets are running to drain your pipes. Simply turn it off like you would any faucet.



Master Shut Off Valve

(Make sure the faucets are turned off before you turn the shut-off valve back on.)

- If you drain your pipes, shut off the hot water heater and protect the hot water from freezing. Buy a kit for as little as \$15 to use as a blanket.

IF YOUR PIPES FREEZE

- Turn off your water at the master shut-off valve. If you are unable to turn water off at the master shut off valve contact the District's operator, H₂O Consulting 281 861-6215 to turn the water off at the meter.
- Call a plumber for help as needed.
- Don't use lamps or electrical appliances to thaw frozen pipes. Leaking water from thawing pipes could cause a short and you could be electrocuted.
- If you try to thaw your own pipes, apply heat slowly, and move it toward the coldest spot on the pipe. Never concentrate heat in one spot – cracking ice can shatter a pipe. Never use an open flame of any sort.

IF YOU HAVE A LOSS

- Contact your insurance agent or company promptly. Follow as soon as possible with a written claim to protect your rights under Texas' prompt-payment law.
- Review your coverage. Homeowners and renters policies pay for property repair. In addition, they pay for debris removal and for temporary additional living expenses if you have to move.
- Check to see if your policy required you to make temporary repairs to protect your property from further damage. Keep all receipts and damaged property for the adjuster to inspect. If possible, take photos or video of the damage before making repairs. Don't make permanent repairs. An insurance company may deny a claim if you make permanent repairs before an adjuster inspects the damage.

Be advised that most homeowner policies do not cover loss caused by freezing pipes while your house is unoccupied unless you have used reasonable care to:

- *maintain heat in the building
- *shut off the water supply
- *drain plumbing, heating, and air conditioning systems of water.

TAX RATE SET

The directors of MUD 208 voted to maintain the MUD Property Tax Rate at \$0.62 per \$100 valuation. Please keep in mind these rates are for MUD 208 only. Other entities such as school districts, hospital district, etc. set their own rates.

The Board of Directors also authorized Bob Leared Interests, our tax assessor-collector, to mail duplicate tax statements in January 2005. These statements will be mailed to homeowners whose original tax statement was requested by and mailed to a mortgage company AND remains unpaid at the time of the January mailing. If you receive a **DUPLICATE TAX STATEMENT**, this is your reminder to contact your mortgage company to ensure their timely payment of your MUD taxes by January 31st, 2005. You can also look up your Harris Co. MUD #208 property taxes by clicking the link www.bli-tax.com on MUD 208's website. Any questions regarding MUD taxes can be directed to Bob Leared Interests, the Board's tax consultant at 713-932-9011.

MUD 208 Website Online

When surfing the net, next time we hope you will access the MUD 208 site at www.harriscountymud208.com

Providing Surface Water to the Copperfield Area

November 2003

Potable water for the Copperfield area is currently provided by various Municipal Utility Districts (MUDs). This water is pumped from groundwater wells, treated, and distributed to users via District owned and operated facilities. While groundwater has been a reliable source to date, the cumulative impacts of groundwater withdrawals from the aquifers of the greater Houston area have been significant. The most significant impact of groundwater pumping has been subsidence. Subsidence, which is the settlement of land resulting from the removal of groundwater from underlying clays, can and has caused damages to underground utilities, roadways, and building structures. More significantly, subsidence has also increased the risk of flood damage by lowering ground elevations.

In an effort to eliminate subsidence due to continued groundwater pumping, the Harris-Galveston Coastal Subsidence District (HGCSO) was created in 1975 to regulate the withdrawal of groundwater within Harris and Galveston counties. As part of its mission, the HGCSO developed various District Regulatory Plans that require regions to convert from groundwater supplies to surface water supplies. The West Harris County Regional Water Authority (WHCRWA) was created in 2001 in order to meet the HGCSO's groundwater reduction requirements for the west Harris County area, which includes Copperfield and MUD 208. While MUD 208's well monitoring efforts have confirmed that we have sufficient groundwater sources for the short-term, the long-term availability of water from our aquifer is not as guaranteed. Therefore, as one of the districts within the WHCRWA, MUD 208 has been actively negotiating with and assisting the Copperfield Area Water Consortium and the WHCRWA to provide surface water to our District.

Under the WHCRWA's submitted Groundwater Reduction Plan, the Copperfield area will be providing 30% of its water from surface water sources by the year 2010, 70% by the year 2020, and 80% by the year 2030. To meet this plan, the WHCRWA has contracted with the City of Houston as a surface water provider, and is progressing towards its goal of developing the necessary infrastructure to provide surface water and meet the HGCSO's groundwater reduction requirements.

The nearest City of Houston water supply to the Copperfield area is in the vicinity of FM 529 and Eldridge Road; therefore additions to the existing water system will be required to deliver this water to the Copperfield districts. Significant strides have been made during the last several months to finalize the proposed alignments of the water transmissions lines that will serve our area. The approved alignment of the water transmission lines is illustrated on the map on the back of this article. Final design of these segments is underway, with the first construction proposed to begin in the spring of 2004. According to the current schedule, surface water will be available to portions of the Copperfield area near the beginning of 2005 with all construction complete by the summer of 2005. To meet this schedule and provide a more timely construction of the needed water improvements and limit the impact time to area residences, current anticipations are that the various contracts for the construction of the water lines will be awarded near simultaneously to different contractors. As the construction of these facilities will cause disruption to some areas during different phases of the construction, we have provided this article and map to help you prepare and plan for the construction projects.

The alignment of the waterline is divided into four contracts as follows (see the map for the location of the contracts):

Contract #1: Provides service from the water source to MUD 130. (Begin Spring '04 – End Beginning of '05)

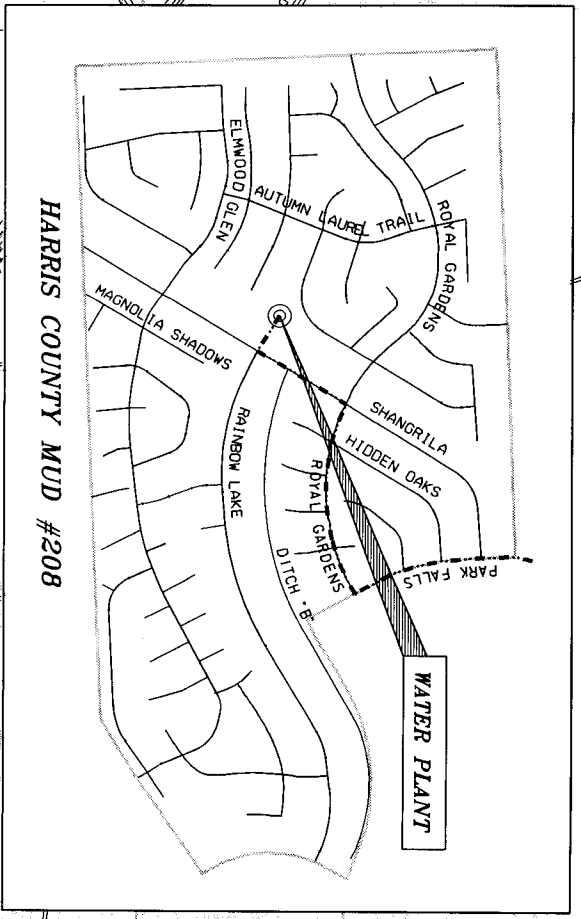
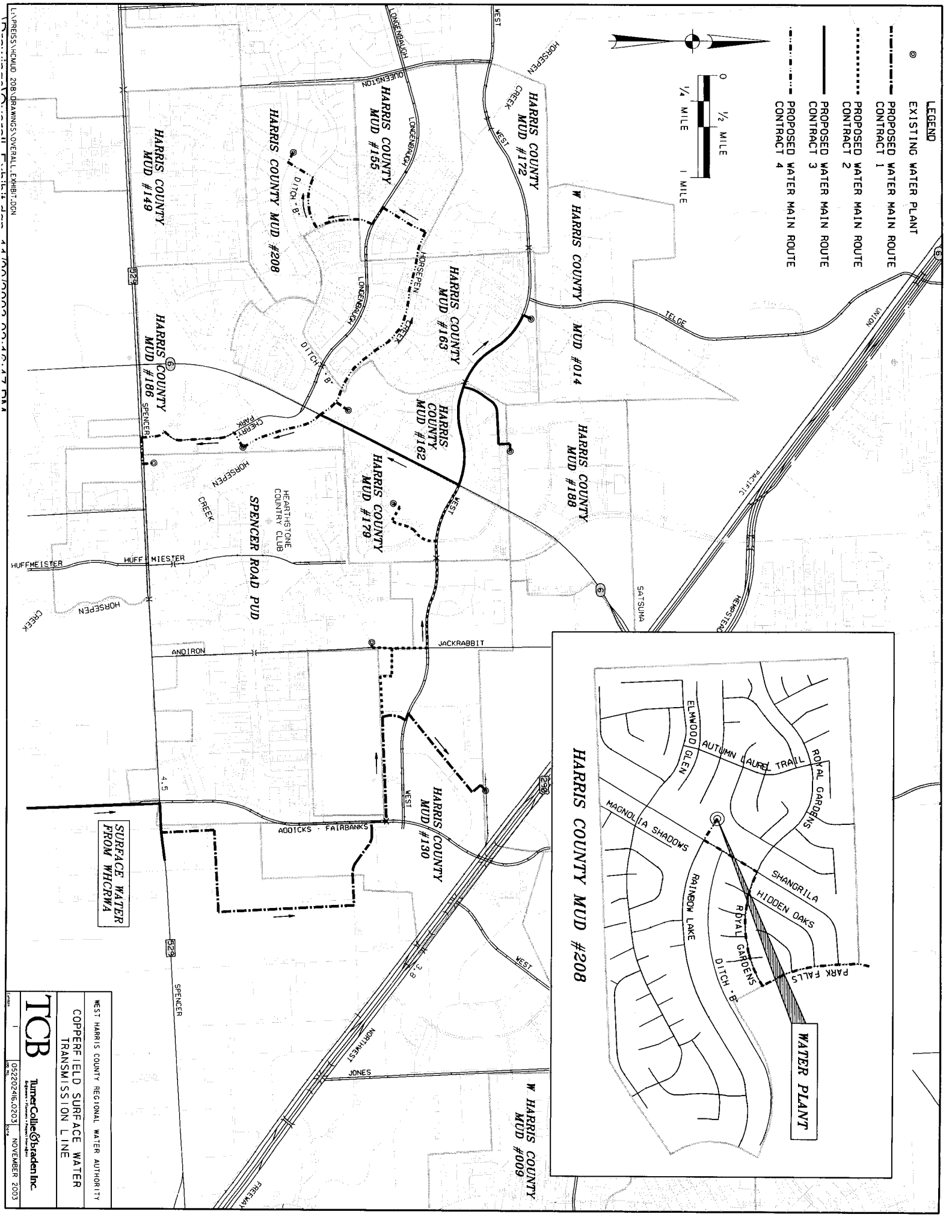
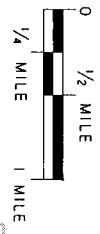
Contract #2: Provides service from Contract #1 to Spencer Road PUD, MUD 179, and Hwy 6. (Begin Spring '04 – End Beginning of '05)

Contract #3: Provides service from Contract #2 to MUDs 188, 163, and further south on Hwy 6. (Begin Spring '04 – End Winter of '04)

Contract #4: Provides service from Contract #3 to MUDs 162, 186, 208, and Spencer Road PUD. (Begin Summer '04 – End Summer '05)

Additional information about MUD 208 can be found at: <http://www.harriscountymud208.com> and additional information about the WHCRWA can be found at <http://www.whcrwa.com>.

- LEGEND**
- EXISTING WATER PLANT
 - PROPOSED WATER MAIN ROUTE CONTRACT 1
 - PROPOSED WATER MAIN ROUTE CONTRACT 2
 - PROPOSED WATER MAIN ROUTE CONTRACT 3
 - PROPOSED WATER MAIN ROUTE CONTRACT 4



SURFACE WATER FROM WHICHWA

WATER PLANT

WEST HARRIS COUNTY REGIONAL WATER AUTHORITY
 COPPERFIELD SURFACE WATER TRANSMISSION LINE

TCB
 TurnerCollieOshaden Inc.
 05220246.0203 NOVEMBER 2003